

pip2 / pip3



PIP2 and PIP3 offer a minimalist, low-profile power solution for desktops with the option to be installed either flush or at an ergonomically designed 8° angle to enhance user access.

Specify with any combination of AC power, TUF-R USB smartphone and laptop charging or wireless fast charging.

Each component used to build PIP2 and PIP3 is carefully selected and sourced, with quality and sustainability at the forefront of our selection process.

All OE Elsafe AC power sockets are autoswitched for a clean look and efficient operation.

PIP2 and PIP3 are built from up to 60% recycled plastic content, and both are compatible with our patented, award-winning TUF-R USB charging modules for easy on-site repairability.

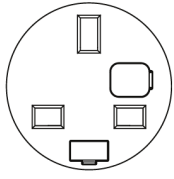
TUF-Rs onsite replaceability by anyone using a simple tool saves time and resources, significantly reducing waste and downtime for the end user.

FEATURES:

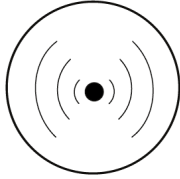
- Install flush (minimalist) or at an ergonomic 8° angle for enhanced user access.
- Compatible with OE's Eco-Award-winning TUF-R USB charging modules
- PIP2 and PIP3 are built using up to 60% post consumer recycled plastic
- Developed by the OE Group, incorporating advanced USB technologies

pip2 /pip3 TECHNICAL

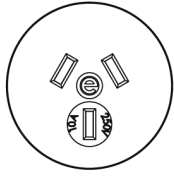
COMMON MODULAR COMPONENTS



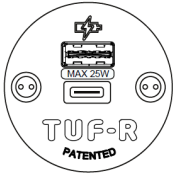
UK Fused
Unfused Available



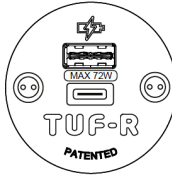
Wireless Charger



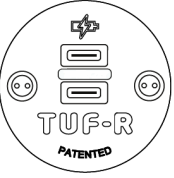
AUS / NZ GPO



TUF-R (25W)
smartphones and
tablets



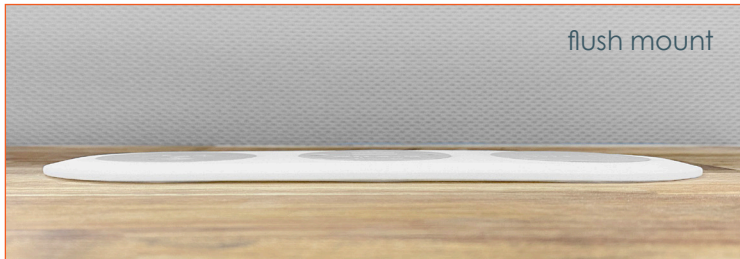
TUF-R HP* (72W)
includes laptop
charging



TUF-R CC* (150W)
charges up to
two laptops

*TUF-R HP must be paired with a power supply unit (PSU) and a GST08 cable.

PIP2 and PIP3 are designed and intended for commercial use



flush mount

CONFIGURATIONS

Choose any combination of AC power, TUF-R USB smartphone / laptop charging, or wireless fast charging

CONSTRUCTION

Body and back – Polycarbonate

INTEGRAL FIXINGS

Screw clamps for surfaces 3mm – 30mm thick

COLOURS

- Socket fascias Grey or Black
- Body & back mouldings – BLACK
- Front Fascia – White or Black

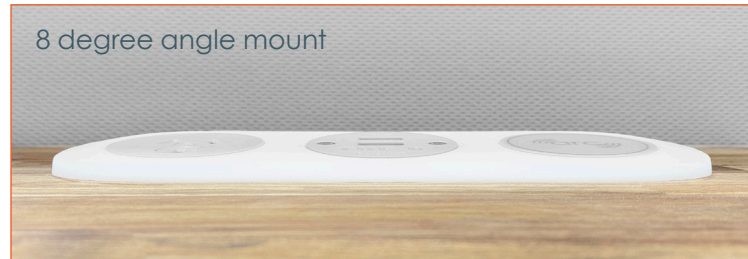
POWER CORD OPTIONS

- Hardwired power cord to GST18-3;

QUALITY AND TESTING

All PIP units are manufactured using ISO9001 quality-controlled components and practices and are 100% tested before dispatch as follows:

- Visual; Configuration & appearance
- Power sockets; Continuity, polarity, insulation and earth
- USB charger; Output voltage & resistance



8 degree angle mount



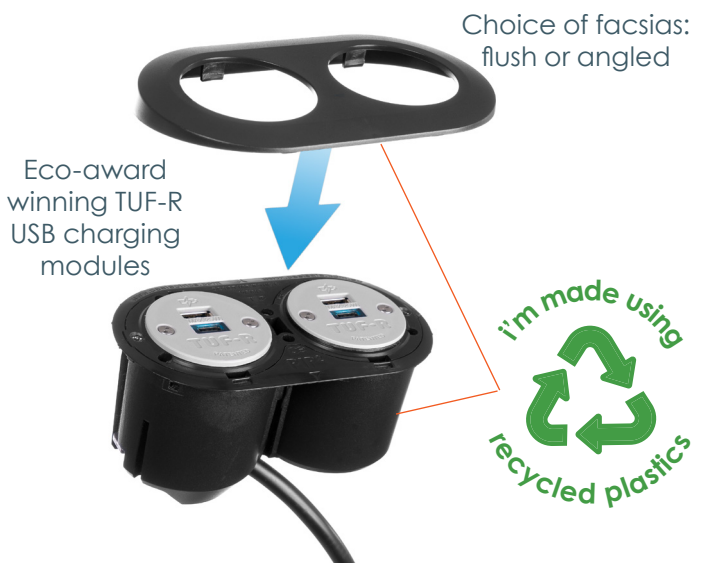
wireless charging option

pip2 /pip3 INSTALLATION

AWARD WINNING ECO FEATURES

PIP2 and PIP3 are compatible with OE's 2023 Australian Business eco-award-winning TUF-R USB charging modules. Designed to be replaced on-site in less than five minutes without turning off the power or calling an electrician, TUF-R USB charging modules minimise facility maintenance costs and significantly reduce waste and downtime for the end user.

PIP2 and PIP3 desktop power units are built from up to 60% recycled post-consumer plastic content, representing a huge leap forward in the evolution of eco-friendly commercial space technologies. Unique to the market, PIP2 and PIP3's eco features introduce a real-world solution to lowering carbon emissions without compromising on quality.



INSTALLATION OPTIONS



8° Angle Installation

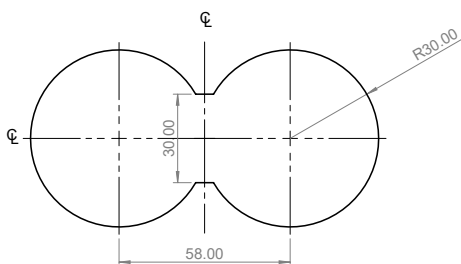


Flush Installation



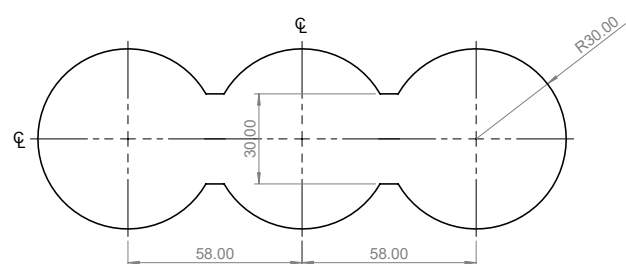
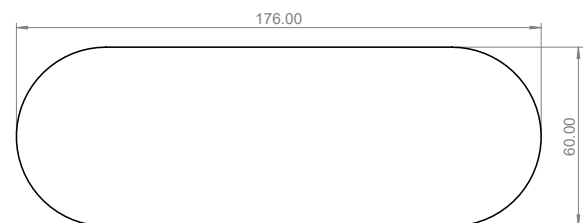
Panel Mount Installation

PIP2 Cutout Dimensions



HOLESAW CUTOUT
58mm PITCH BETWEEN 2 x 60mm HOLES
FLAT CUT TO 30mm(-0+2mm)

PIP3 Cutout Dimensions



HOLESAW CUTOUT
58mm PITCH BETWEEN 3 x 60mm HOLES
FLATS CUT TO 30mm(-0+2mm)

TUF-R TECHNICAL



TUF-R and TUF-R HP are quick and simple to replace without the need for an electrician or turning off the power. The unique and patented benefit of being replaceable makes TUF-R perfect for areas of high usage.

CLICK to see how quick and easy TUF-R / TUF-R HP is to replace.

Upgrading or replacing the TUF-R module and not the whole product saves time, money, and significantly reduces waste.

Being replaceable also allows TUF-R to be upgraded in the future to incorporate the latest technologies.



TUF replacing tool.



Insert the 'snake eye' bit into the tool as shown.



Use the tool to unscrew the 'snake eye' screws.



Lift off the TUF fascia



Insert the second part of the TUF replacing tool into the TUF as shown, until a click is heard.



Pull the TUF cartridge out from the unit.



Unwrap and insert the new TUF cartridge, paying close attention to the orientation of the cartridge to the blue housing.



Push the cartridge into the blue housing until a click is heard.



Place the TUF fascia back into position.



Using the TUF replacing tool and 'snake eye' bit, screw the snake eye screws back into place